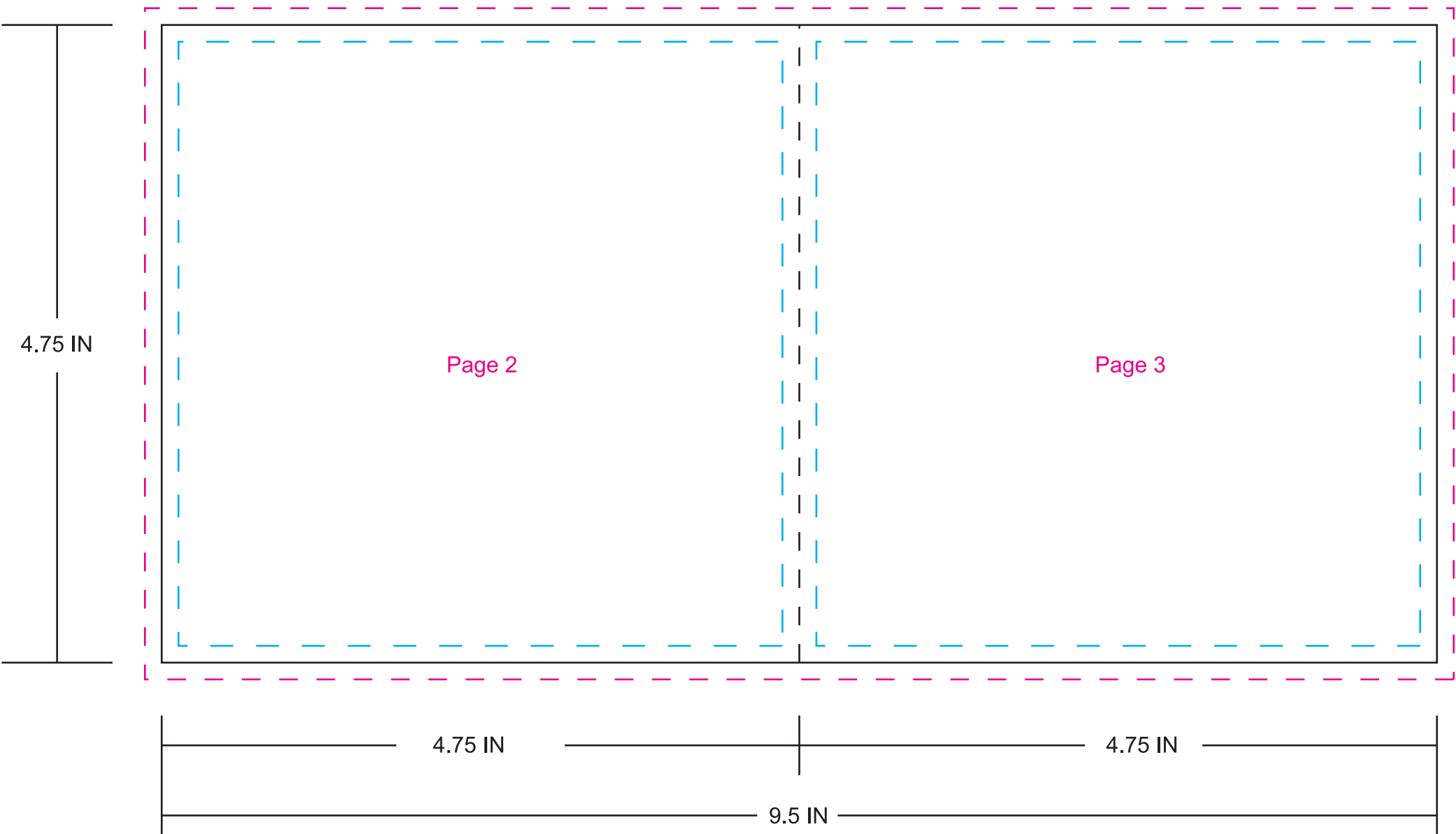
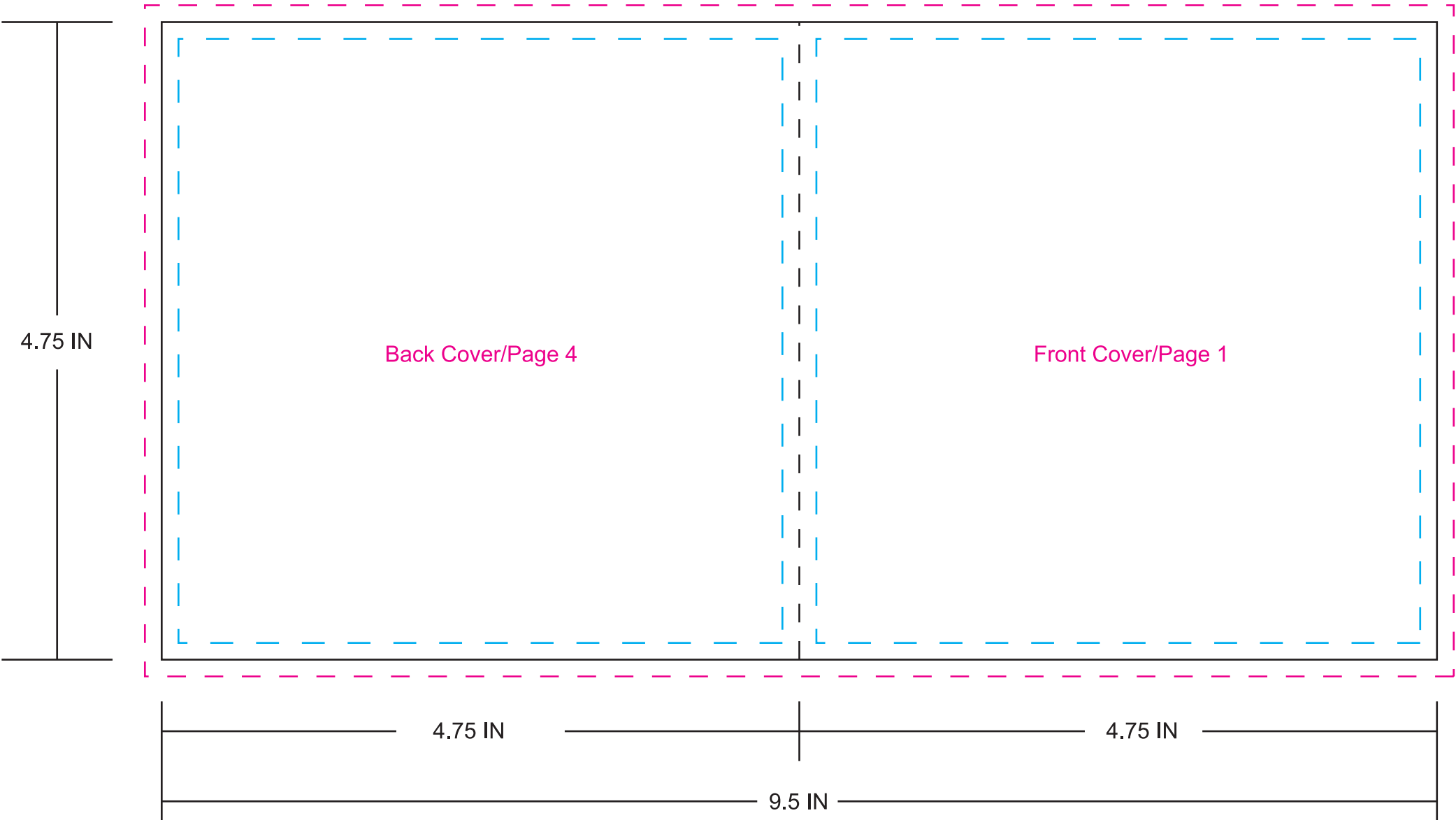


4 Panel CD Insert



BLEED LINE Take all background art to this bleed line (this ensures you get a nice clean edge after the print is trimmed)
* please crop art to bleed line (this will ensure proper placement in the print shop)

TRIM/FOLD LINES Within these lines is where your final art will sit once trimmed/ folded in the printing process

SAFETY LINE Please keep all Text and Important elements within these guides (this is your safety area)